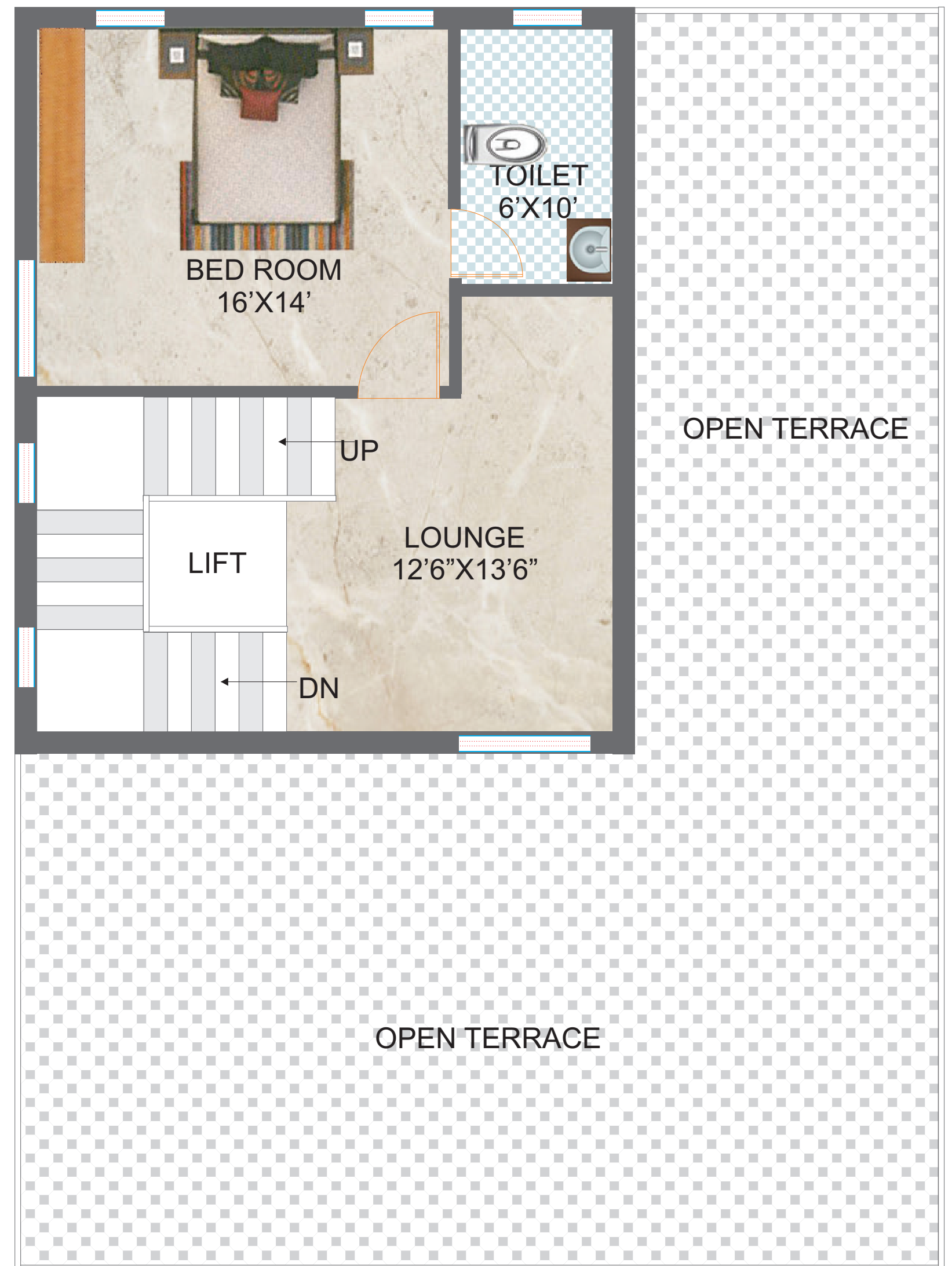


First Floor Plan





Second Floor Plan



Third Floor Plan

DESCRIPTION :: TRIPLEX VILLA5,500 Sq. feet (G+3 Floors)5 Bed Rooms, Living Room, Kitchen / Dining, Home Theatre Room, Pooja Room, Provision for 2 Car parkings, Open Terraces on 2 nd and 3 rd floors.	
SPECIFICATIONS	
Structure	RCC Framed Structure with 7”/6” thick RCC concrete slab.
Super Structure	Light weight Red Brick with Cement mortar. All external walls 9” & All internal walls 5”
Plastering/Finishing	Sponge finish (2 coats). POP wall punning work in all rooms
Water proofing	Water proofing will be done in All Bathrooms, terraces and other utility areas.
Granite Work	Granite cladding work for parapet walls, Balconies, Windows, Bathroom ventilators, bathroom door frames and compound walls.
Doors	Main door frame with best Indian teak & shutter with teak veneer/ laminated with Biometric lock, other door frames with Indian Teak wood with laminated doors with premium Hardware.
Kitchen	Provision for RO system and Provision for Dish washer. Adequate number of power points.
Windows	UPVC / Aluminum windows with plain glass.Provision for mosquito mesh.
Flooring	Internal flooring with big size vitrified digital tiles with 4” skirting in all the rooms. Staircase with granite/quartz flooring. Parking area with Granite or Good quality tiles.
Bath Rooms	Wall mounted/ Floor mounted W.C with concealed flush tanks (Grohe) and counter wash basins in all bathrooms. Anti-skid tiles flooring with tiles dado up to roof height. Hindware/Jaguar/Grohe Sanitary fittings and Grohe/Jaguar or its equivalent CP fittings. Provision for glass shower cubicles in 2 bathrooms.
Water Supply	Concealed CPVC piping (Ashirwad) , water supply through Bore, sump & overhead tank, provision for Manjeera water in Kitchen. Superior quality PVC pipes for drainage lines.
Electrical	Concealed copper (polycab/Havells) wiring with adequate No. of light & fan points in all rooms with Modular Switches, provision for home automation, provision for geyser points in all bathrooms, Fridge point, Internet points, TV points will be provide in all rooms. Provision for EV charging in parking area.
Painting:Internal	2 coats of Birla/JK wall putty with2 coats AsianRoyale paint. <u>External:</u> Waterproof Texture/Birla/JK wall putty, Damp proof primer and with 2 coats of Asian paints APEX ultima protect paint.
AC piping	AC pipeline work done in all rooms
Lift	3/ 4passenger Home elevator will be provided.
Solar Power	Provision for Solar power generation system on terrace and solar fencing on compound walls
Power Backup	100% power back-up